

DECCA | CONTRACT



SKYWARD

Table Talk.

SKYWARD | BY ALYSSA COLETTI

Designed to act as a catalyst for lively conversation and big ideas, the Skyward table projects a bold and confident presence. The table's distinctive look is created by the ascending lines of the base, which intersect the sweeping surface of the tabletop to yield a dynamic form with clean-cut edges that accentuate structure and craft.







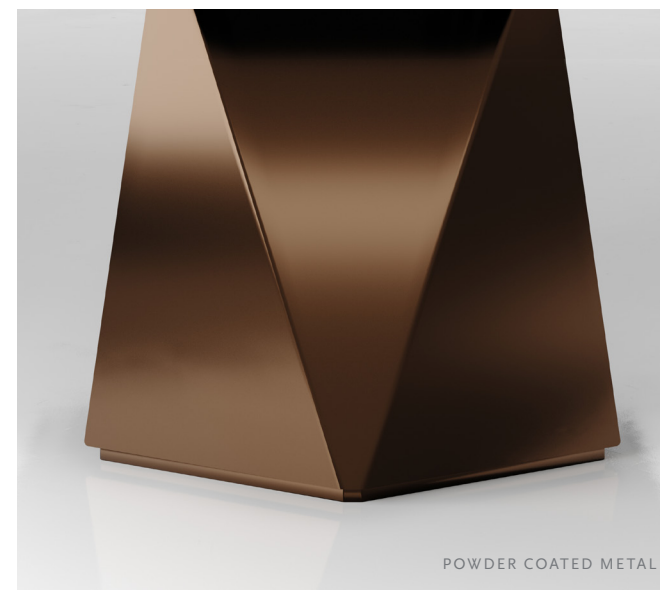
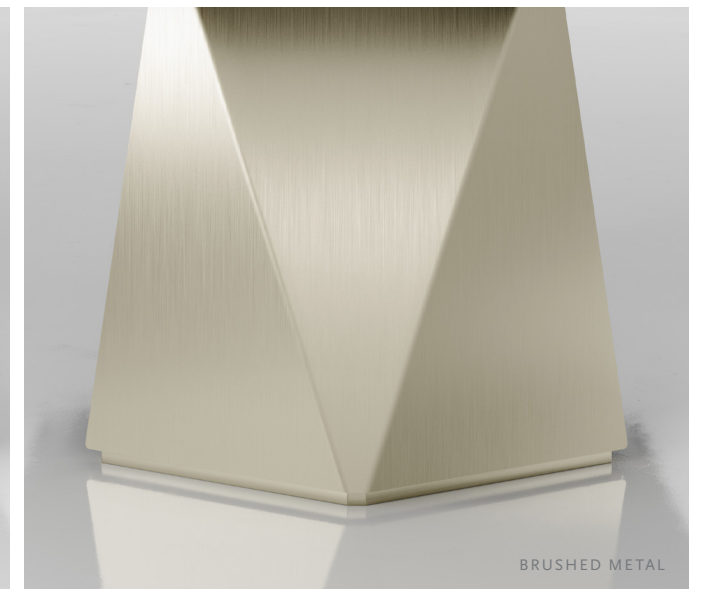




SKYWARD

Evoking a lofty sense of purpose, Skyward is ideal for board rooms and corporate meeting rooms, as well as the executive office or a private dining room. Material and finish choices allow for unique aesthetic solutions appropriate to the space and the spirit of the setting.

- Main panel and small recessed panel on base can be specified independently, permitting a mix of materials and finishes, including veneer, brushed metal, powder coated metal, and stone.
- Concealed drawers preserve purity of line while providing discreet wire management and access to power.
- LED lights beneath the tabletop illuminate and accent the geometry of the table bases.





ABOUT ALYSSA COLETTI

Alyssa Coletti founded Nonfiction Creative as a multidisciplinary studio focused on the elements of concept, form and craft in contemporary furniture design. Alyssa holds a degree in industrial design from Purdue University, augmented by further studies in design and architecture in Denmark.